

# UCLA

## 9th Annual

# Cancer Prevention and Control Symposium 2008



UCLA's  
JONSSON  
COMPREHENSIVE  
CANCER  
CENTER

---



**Making Healthier Choices  
Easier Choices:  
Lessons Learned from  
Tobacco Control**

**2008 Symposium**

**Roshan Bastani, PhD**

**UCLA**

School of Public Health

Jonsson Comprehensive Cancer Center

Division of Cancer Prevention and Control Research

Thursday, May 15, 2008

# Leading Cause of Deaths

USA

<b>Age</b>	<b>Disease</b>
<b>35-44</b>	<b>Cancer</b>
<b>45-54</b>	<b>Cancer</b>
<b>55-64</b>	<b>Cancer</b>
<b>65-74</b>	<b>Cancer</b>
<b>75-84</b>	Heart Disease
<b>85+</b>	Heart Disease

# US Leading Causes of Cancer Deaths

<b>Risk Factor</b>	<b>Percent</b>
<b>Tobacco</b>	<b>30%</b>
<b>Nutrition/Obesity</b>	<b>30%</b>
<b>Inactivity</b>	<b>5%</b>
<b>Family history of cancer</b>	<b>5%</b>
<b>Viruses and other biological agents</b>	<b>5%</b>
<b>Reproductive factors</b>	<b>3%</b>
<b>Alcohol</b>	<b>3%</b>
<b>Socioeconomic status</b>	<b>3%</b>
<b>Environmental pollution</b>	<b>2%</b>
<b>Ionizing/ultraviolet radiation</b>	<b>2%</b>

Source: Adapted from the Harvard Report on Cancer Prevention, 1996.

# DISEASES CAUSED BY SMOKING

## CANCERS

Larynx

Oropharynx

Oesophagus

Trachea, bronchus or lung

Acute myeloid leukemia

Stomach

Pancreas

Kidney and Ureter

Colon

Cervix

Bladder

## CHRONIC DISEASES

Stroke

Blindness, Cataracts

Periodontitis

Aortic aneurysm

Coronary heart disease

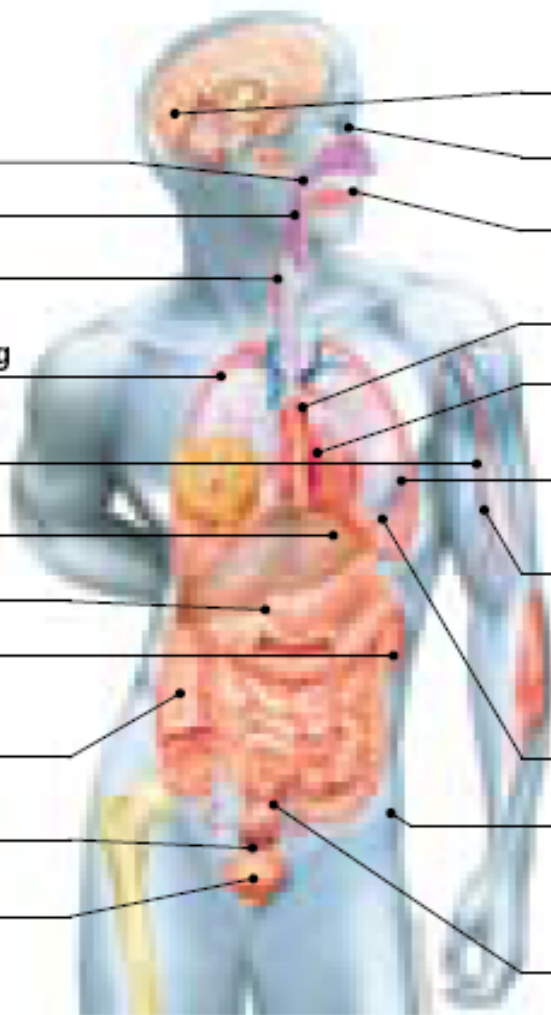
Pneumonia

Atherosclerotic peripheral vascular disease

Chronic obstructive pulmonary disease (COPD), asthma, and other respiratory effects

Hip fractures

Reproductive effects in women (including reduced fertility)



# DISEASES CAUSED BY SECOND-HAND SMOKE

## CHILDREN

Brain tumours\*

Middle ear disease

Lymphoma\*

Respiratory symptoms,  
Impaired lung function

Asthma\*

Sudden Infant Death  
Syndrome (SIDS)

Leukemia\*

Lower respiratory illness

## ADULTS

Stroke\*

Nasal irritation,  
Nasal sinus cancer\*

Breast cancer\*

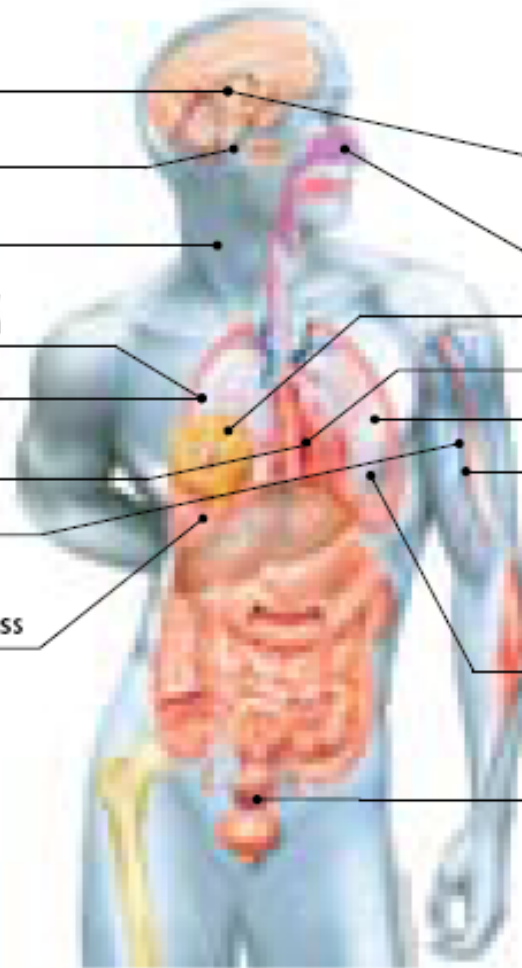
Coronary heart disease

Lung cancer

Atherosclerosis\*

Chronic obstructive  
pulmonary disease  
(COPD)\*, Chronic respiratory  
symptoms\*, Asthma\*,  
Impaired lung function\*

Reproductive effects in  
women: Low birth weight;  
Pre-term delivery\*



\* Evidence of causation: suggestive  
Evidence of causation: sufficient



2004-2009



**CORICA**

UCLA • Community Research in Cancer

*Principal Investigator*  
**Roshan Bastani, PhD**

*Co-Principal Investigators*  
**Antronette Yancey, MD, MPH**  
**Annette Maxwell, DrPH**  
**Beth Glenn, PhD**

*Project Director*  
**Ritesh Mistry, PhD**

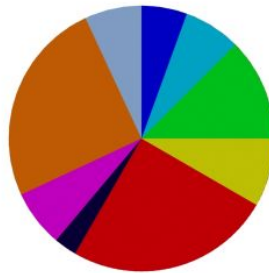
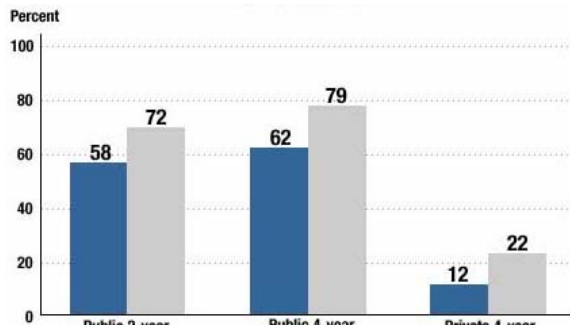
*Project Coordinator*  
**Irene Pena, MA**

# Community-Based Cancer Prevention and Control Programs are Critical

**Important to only implement programs  
that work**

How do you know if a program is effective?

**RESEARCH**



# Long Term Goal

Reduce cancer disparities in our diverse populations

## University



## Community



*Thank You*

## **Symposium Planning Committee**

### **COMMUNITY**

**LINDA ARAGON**

Los Angeles County Tobacco Control and  
Prevention Program

**RIGOBERTO GARCIA**

North East Valley Health Corporation

**CAREY JANUARY**

Girls Club Los Angeles

**LORI KUNDRAT**

American Cancer Society

**RUBEN RODRIGUEZ**

Pueblo y Salud

**DEBRA ROSEN**

North East Valley Health Corporation

**ZUL SURANI**

National Cancer Institute's Cancer Information  
Service

### **UCLA**

**Barbara Berman**

**Beth Glenn**

**Joyce Jones Guinyard**

**Felicia Hodge**

**William McCarthy**

**Ritesh Mistry**

**Minal Patel**

**Irene Peña**

#### ***With assistance from:***

Cynthia Antonio

Mona Auyoung

Alison Herrmann

Cathy Lang

Rosana Leos

Cynthia Mojica

Jenifer Tsui

Pam Willis